



RETURN TO PLAY

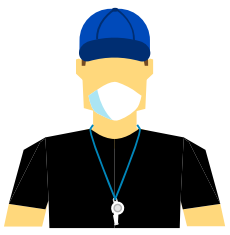
GUIDELINES: PHASE 3

***IF YOU ARE NOT COMFORTABLE RETURNING TO PLAY, DON'T**

ON-FIELD MODIFICATIONS:

≤10

9 PLAYERS + 1 COACH



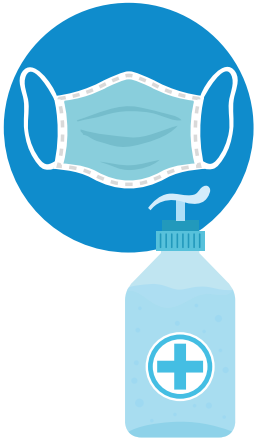
ONSITE DIRECTOR AT ALL FACILITIES



PHYSICALLY DISTANT TRAININGS - 10 FT.



CONTACTLESS TRAININGS



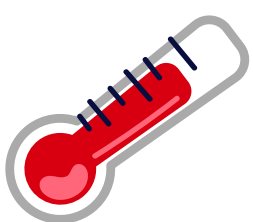
STAFF AND COACHES WEAR FACE COVERINGS

SANITATION STATIONS AT ALL FACILITIES



STAGGERED TRAINING TIMES

MUST DO'S:



SICK, DON'T COME



PARENTS STAY IN VEHICLES



NO CONGREGATING IN GROUPS

Trevian SC will strictly follow the guidelines set forth by the State of Illinois. As the State moves into a new Phase, we too will follow suit.